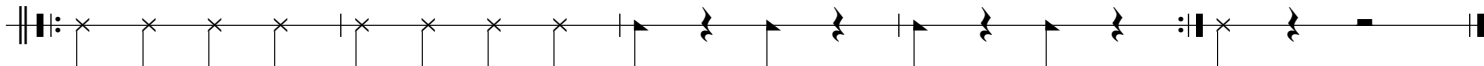


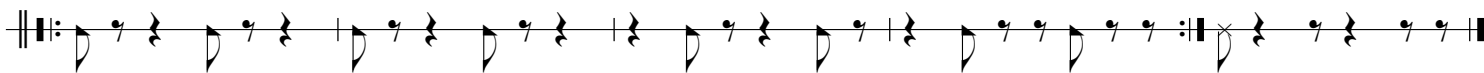
DRUMLINE TECHNIQUE EXERCISES

CYMBAL SPLITS

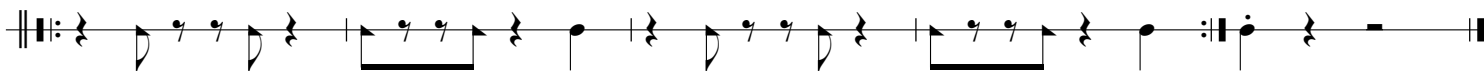
UNISON A - EIGHTS



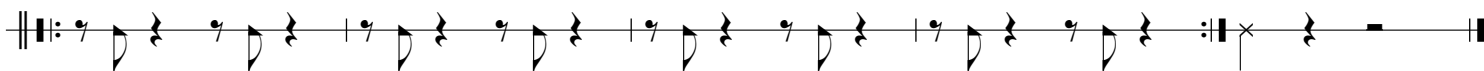
UNISON B - BUCKS



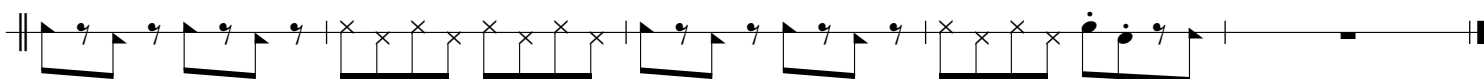
UNISON C



SAMBA ACCENT



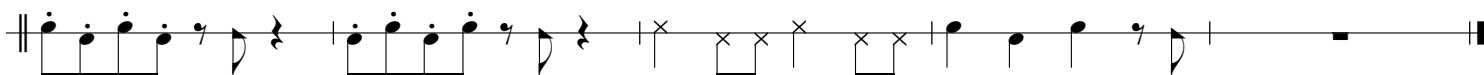
SPLIT A



SPLIT B



SPLIT C



Cymbal parts are designated with the following note heads:

▲
fusion crash
(sizzle crash that closes into a "chick"
on the next rest)

×
high-hat "chick"

●
traditional crash
(if marked staccato, play short)