

# Bb Major Mallet Etudes

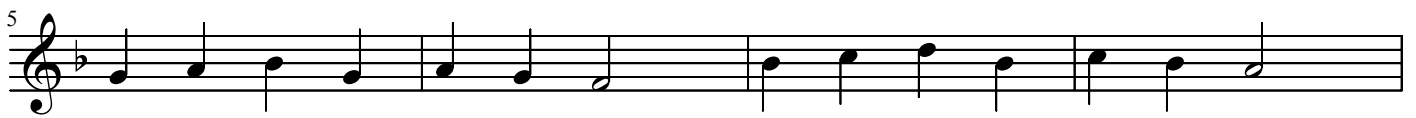
Notice the two flat signs in the key signature. This means you'll play Bb's and Eb's.

The image displays two systems of musical notation for mallet etudes in Bb major. Each system consists of four staves of music in a common time signature (C). The first system contains measures 1 through 13, and the second system contains measures 1 through 10. The key signature is Bb major, indicated by two flat signs (Bb and Eb). In the seventh measure of the second system, there is an accidental natural sign (♮) placed before the note on the second line of the staff, which is marked with an asterisk (\*).

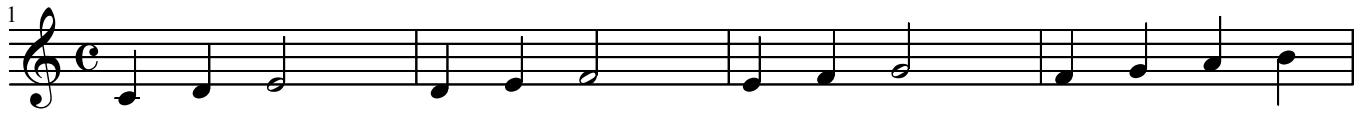
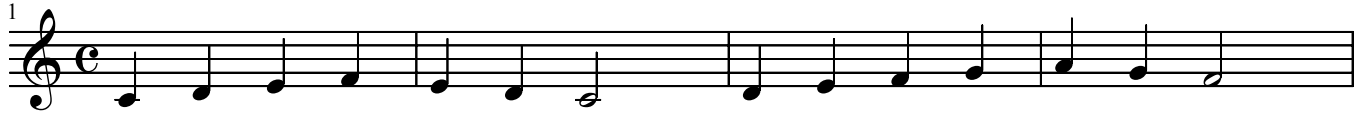
\* Note: this note will be played as E natural because of the natural sign in front of the note. A change from the key signature is usually called an accidental. When an accidental is used, it applies to any note on that line or space for the rest of the measure.

# F Major Mallet Etudes

*Notice the flat sign in the key signature. This means that all B's will be played as Bb's.*



# C Major Mallet Etudes



# G Major Mallet Etudes

*Notice the sharp sign in the key signature. This means all F's will be played as F#'s.*

