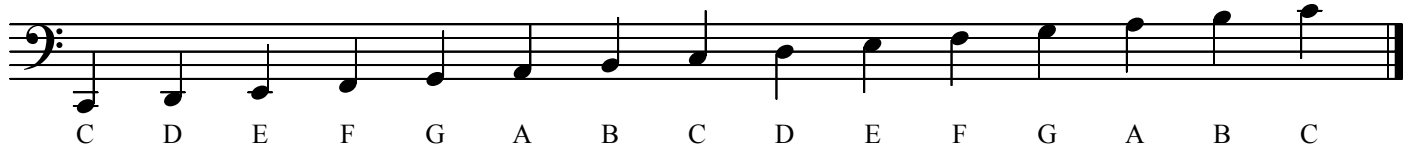


# Note Naming

Below are the notes listed in order for both treble clef and bass clef. Notice how the order is the same (alphabetical), but the positions are slightly different in each clef.



Here is another way to remember the notes within the treble and bass clef staves. Notice how the spaces in treble clef spell the word FACE. For the lines in treble clef, and both the spaces & lines in bass clef, the name of each note begins a word in a short phrase that is easy to remember.



Now, here is a quick opportunity to practice. Write the name of each note below and then check it with the top of the page. Make sure to answer first and check second!

