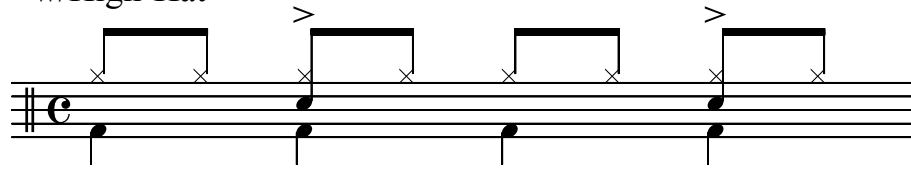
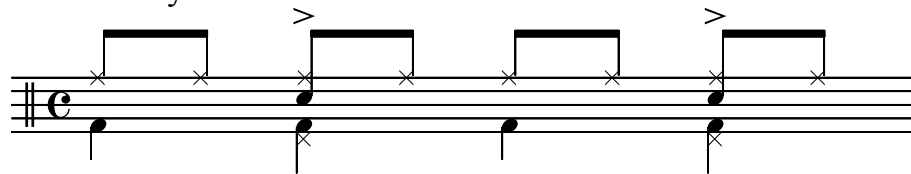


Rock Beat

w/High-Hat

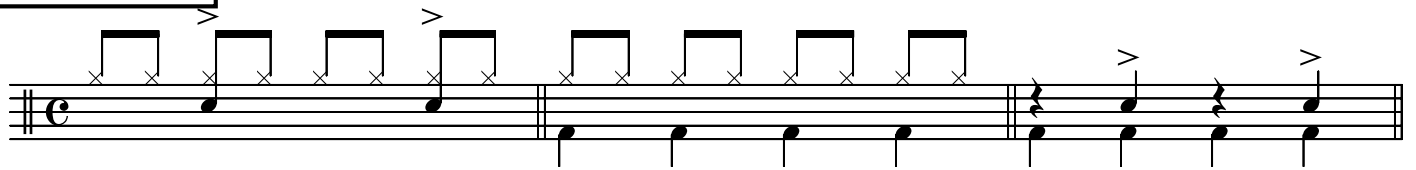


w/Ride Cymbal

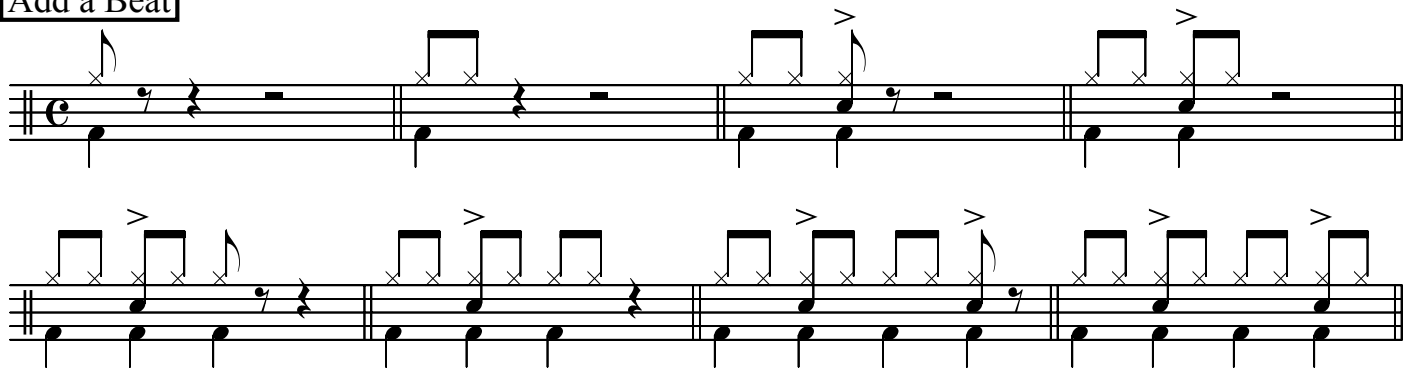


Practice Ideas & Variations

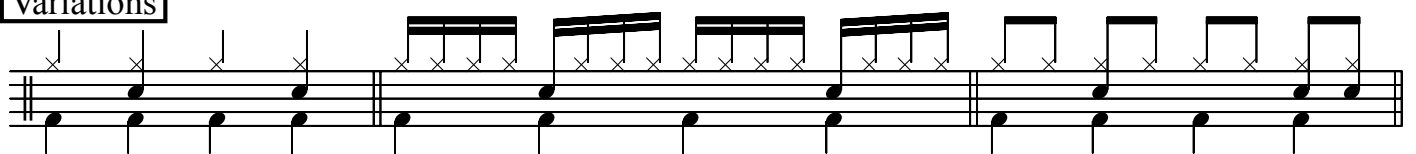
Combinations



Add a Beat



Variations



Slow Rock

w/High-Hat

Musical notation for a High-Hat pattern in common time (C). The top staff shows four eighth-note pairs with accents (>) and 'x' marks above them. The bottom staff shows a bass line with a dotted quarter note, a quarter note, a quarter note, and a quarter note.

w/Ride Cymbal

Musical notation for a Ride Cymbal pattern in common time (C). The top staff shows four eighth-note pairs with accents (>) and 'x' marks above them. The bottom staff shows a bass line with a dotted quarter note, a quarter note, a quarter note, and a quarter note.

Practice Ideas & Variations

Combinations

Musical notation for 'Combinations' practice in common time (C). The top staff shows a sequence of eighth-note pairs with accents (>) and 'x' marks. The bottom staff shows a bass line with a dotted quarter note, a quarter note, a quarter note, and a quarter note.

Add a Beat

Musical notation for 'Add a Beat' practice in common time (C). The top staff shows a sequence of eighth-note pairs with accents (>) and 'x' marks, with some rests. The bottom staff shows a bass line with a dotted quarter note, a quarter note, a quarter note, and a quarter note.

Variations

Musical notation for 'Variations' practice in common time (C). The top staff shows a sequence of eighth-note pairs with accents (>) and 'x' marks, including some beamed eighth notes. The bottom staff shows a bass line with a dotted quarter note, a quarter note, a quarter note, and a quarter note.

Swing

(in 4)

Musical notation for a triplet exercise in 4/4 time. The staff shows a sequence of notes: a quarter note, a quarter note, a quarter note, and a quarter note. The first and third notes are grouped with a bracket and a '3' above them, indicating a triplet. The second and fourth notes are quarter notes. The exercise is repeated twice.

(in 2)

Musical notation for a triplet exercise in 2/4 time. The staff shows a sequence of notes: a quarter note, a quarter note, a quarter note, and a quarter note. The first and third notes are grouped with a bracket and a '3' above them, indicating a triplet. The second and fourth notes are quarter notes. The exercise is repeated twice.

Practice Ideas & Variations

Combinations

Musical notation for combinations of triplet and quarter notes. The staff shows a sequence of notes: a quarter note, a quarter note, a quarter note, and a quarter note. The first and third notes are grouped with a bracket and a '3' above them, indicating a triplet. The second and fourth notes are quarter notes. The exercise is repeated twice.

Add a Beat

Musical notation for adding a beat to the triplet exercise. The staff shows a sequence of notes: a quarter note, a quarter note, a quarter note, and a quarter note. The first and third notes are grouped with a bracket and a '3' above them, indicating a triplet. The second and fourth notes are quarter notes. The exercise is repeated twice.

Variations

Musical notation for variations of the triplet exercise. The staff shows a sequence of notes: a quarter note, a quarter note, a quarter note, and a quarter note. The first and third notes are grouped with a bracket and a '3' above them, indicating a triplet. The second and fourth notes are quarter notes. The exercise is repeated twice.

Jazz Waltz

Jazz Waltz 1

Musical notation for Jazz Waltz 1, featuring a 3/4 time signature and a key signature of one sharp (F#). The melody consists of a quarter note on G4, followed by a triplet of eighth notes (A4, B4, C5), and a quarter note on D5. The bass line consists of a quarter note on G3, a quarter rest, and a quarter note on G3.

Jazz Waltz 2

Musical notation for Jazz Waltz 2, featuring a 3/4 time signature and a key signature of one sharp (F#). The melody consists of a quarter note on G4, followed by a triplet of eighth notes (A4, B4, C5), and a quarter note on D5. The bass line consists of a quarter note on G3, a quarter rest, and a quarter note on G3.

Practice Ideas & Variations

Combinations

Musical notation for Combinations, featuring a 3/4 time signature and a key signature of one sharp (F#). The melody consists of a quarter note on G4, followed by a triplet of eighth notes (A4, B4, C5), and a quarter note on D5. The bass line consists of a quarter note on G3, a quarter rest, and a quarter note on G3.

Combinations (2)

Musical notation for Combinations (2), featuring a 3/4 time signature and a key signature of one sharp (F#). The melody consists of a quarter note on G4, followed by a triplet of eighth notes (A4, B4, C5), and a quarter note on D5. The bass line consists of a quarter note on G3, a quarter rest, and a quarter note on G3.

Add a Beat

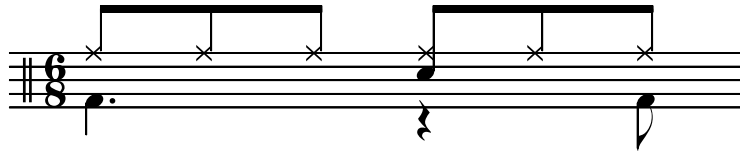
Musical notation for Add a Beat, featuring a 3/4 time signature and a key signature of one sharp (F#). The melody consists of a quarter note on G4, followed by a triplet of eighth notes (A4, B4, C5), and a quarter note on D5. The bass line consists of a quarter note on G3, a quarter rest, and a quarter note on G3.

Add a Beat (2)

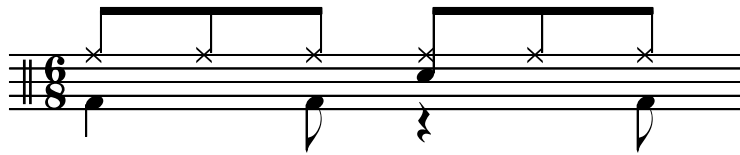
Musical notation for Add a Beat (2), featuring a 3/4 time signature and a key signature of one sharp (F#). The melody consists of a quarter note on G4, followed by a triplet of eighth notes (A4, B4, C5), and a quarter note on D5. The bass line consists of a quarter note on G3, a quarter rest, and a quarter note on G3.

6/8 Patterns

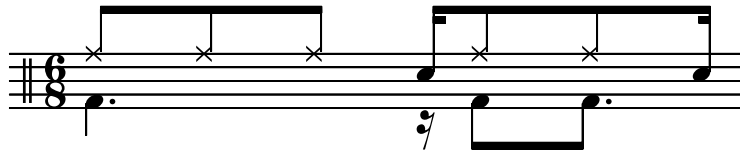
Basic 6/8



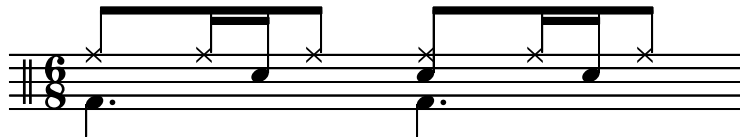
6/8 Shuffle



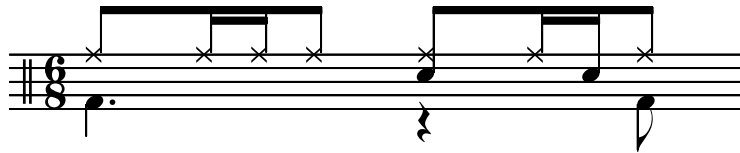
6/8 Afro Cuban



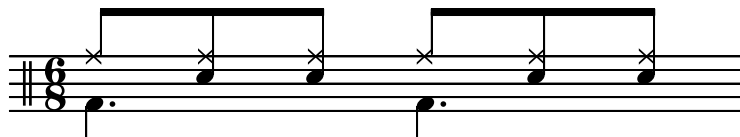
6/8 Variation 1



6/8 Variation 2

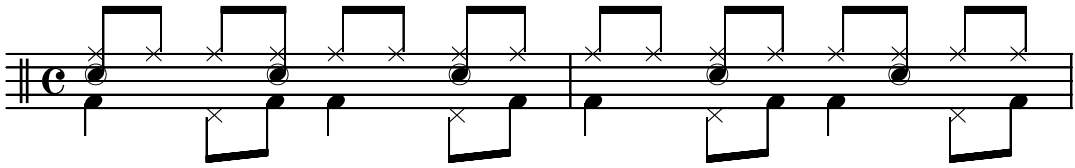


6/8 Um-Pa-Pa



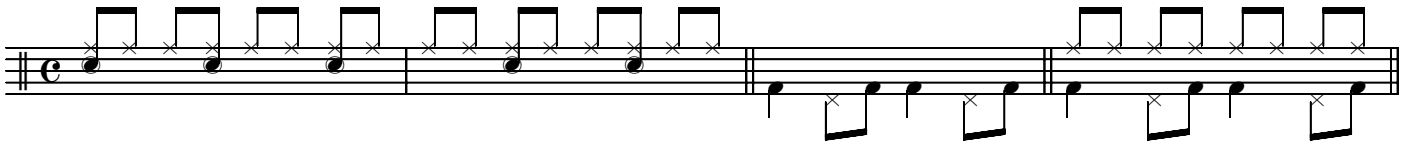
Bossa Nova

(3/2 clave)

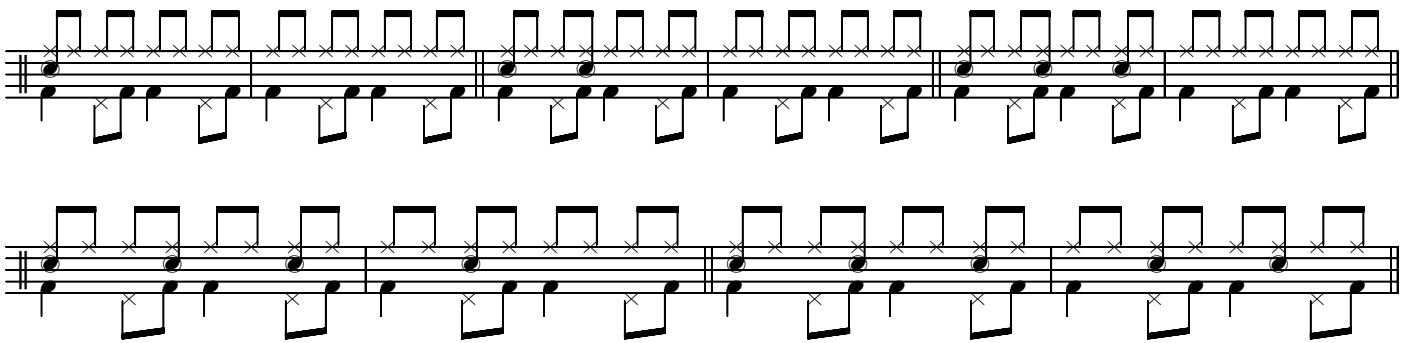


Practice Ideas & Variations

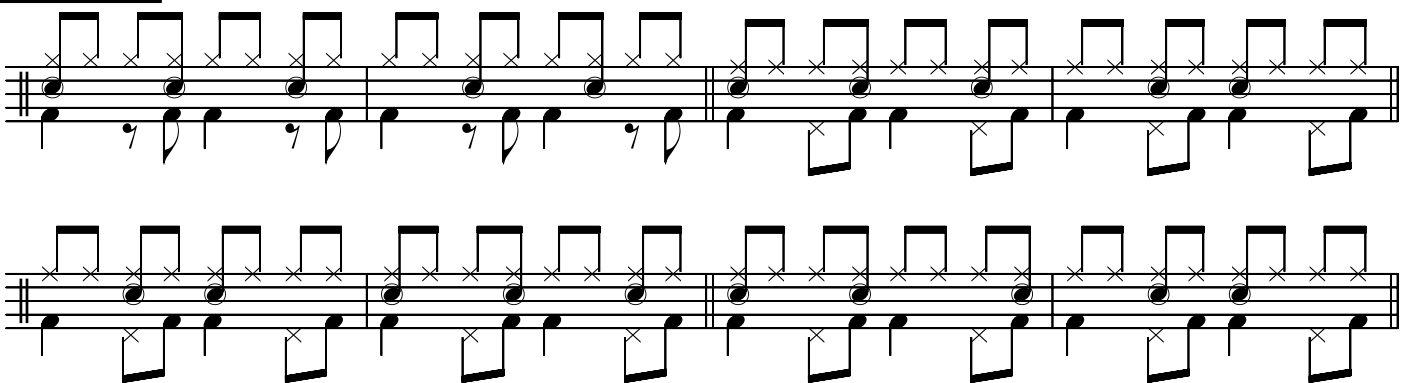
Combinations



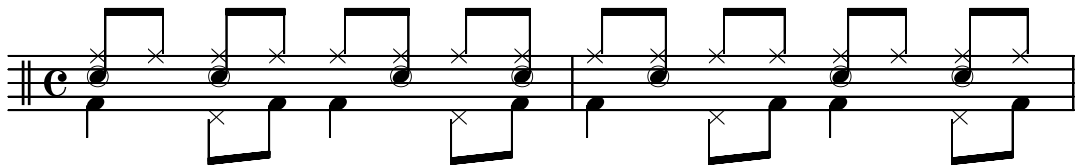
Add a Beat



Variations

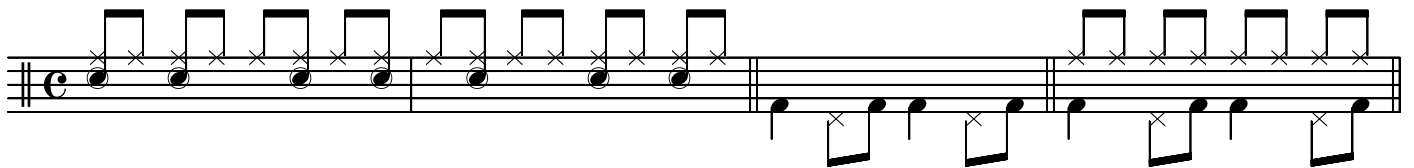


Samba

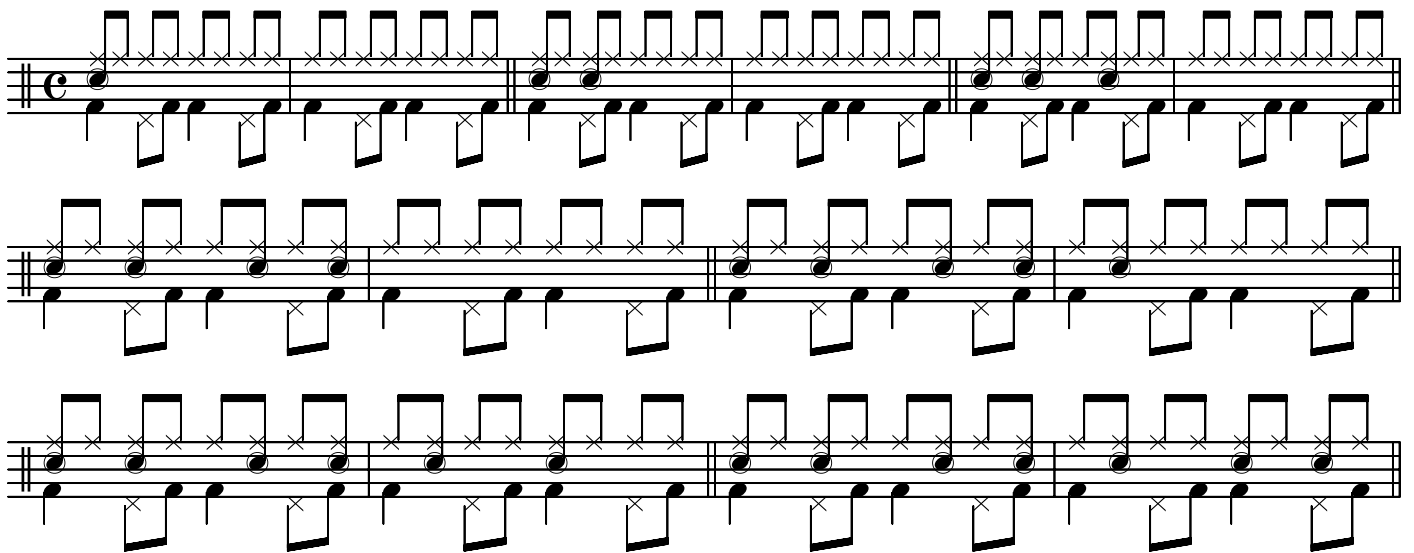


Practice Ideas & Variations

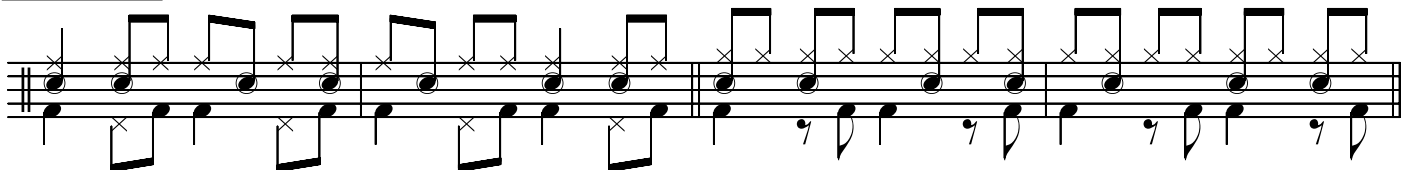
Combinations



Add a Beat



Variations



Calypso/Soca

Calypso/Soca 1

Musical notation for Calypso/Soca 1, featuring a single staff with a treble clef and a common time signature. The melody consists of eighth notes with accents and a final quarter note with a fermata. The bass line consists of quarter notes with accents.

Calypso/Soca 2

Musical notation for Calypso/Soca 2, featuring a single staff with a treble clef and a common time signature. The melody consists of eighth notes with accents and a final quarter note with a fermata. The bass line consists of quarter notes with accents.

Practice Ideas & Variations

Combinations

Musical notation for Combinations, featuring a single staff with a treble clef and a common time signature. The melody consists of eighth notes with accents and a final quarter note with a fermata. The bass line consists of quarter notes with accents.

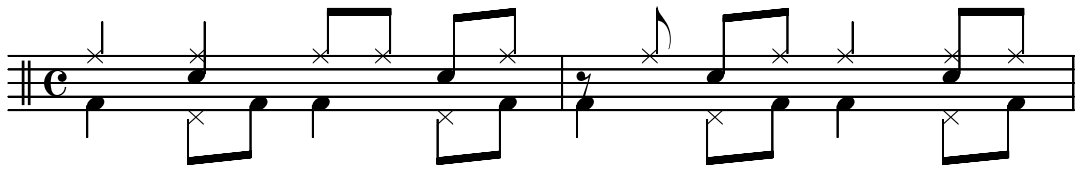
Add a Beat

Musical notation for Add a Beat, featuring two staves with a treble clef and a common time signature. The melody consists of eighth notes with accents and a final quarter note with a fermata. The bass line consists of quarter notes with accents.

Combinations (2)

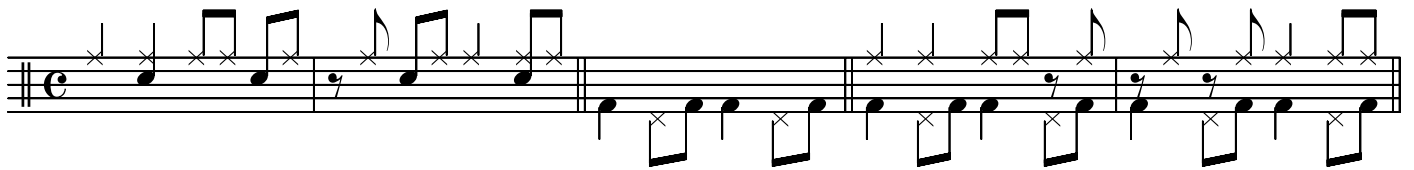
Musical notation for Combinations (2), featuring a single staff with a treble clef and a common time signature. The melody consists of eighth notes with accents and a final quarter note with a fermata. The bass line consists of quarter notes with accents.

Funk Samba

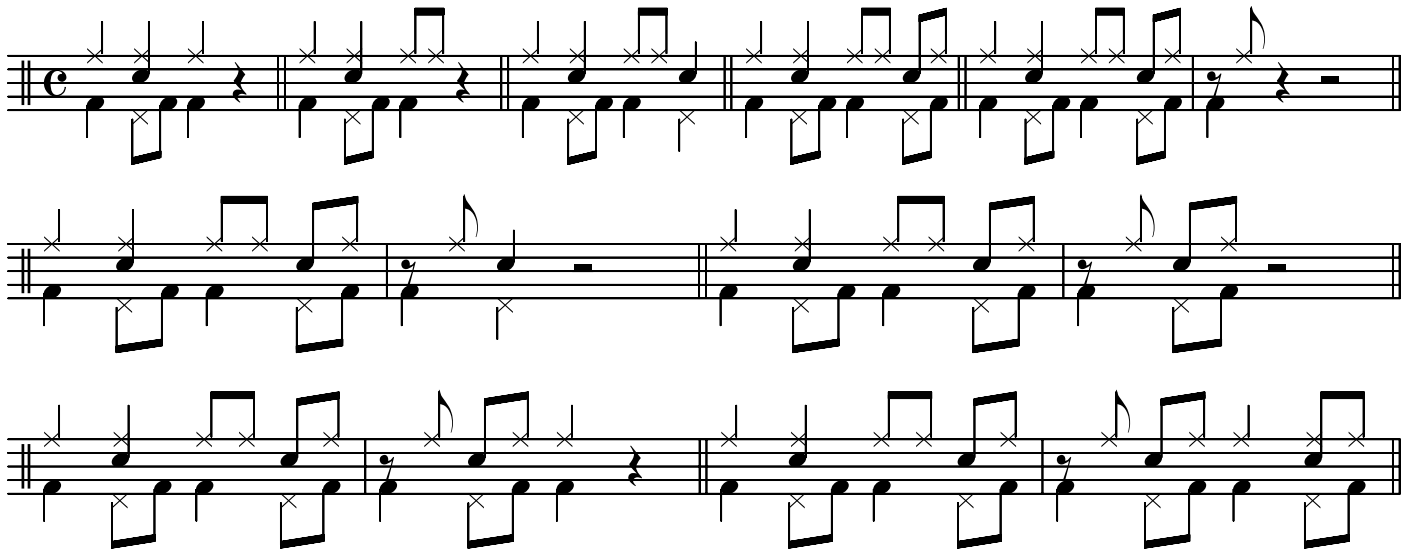


Practice Ideas & Variations

Combinations



Add a Beat



Variations

